

# CAT 312ER3

## EXCAVATOR | 12 - 14 TONNE



### FEATURES:

- Rubber or Steel Tracks
- 7" LCD Monitor
- Automatic Climate Control
- Reinforced ROPS System
- Wide Service Doors
- Meets Tier 4 Emissions Standards
- Minimized Fuel Consumption
- Main Control and Auxiliary Valves
- Improved Cabin Sound Proofing
- Dozer Blade Available

### DIMENSIONS & WEIGHT:

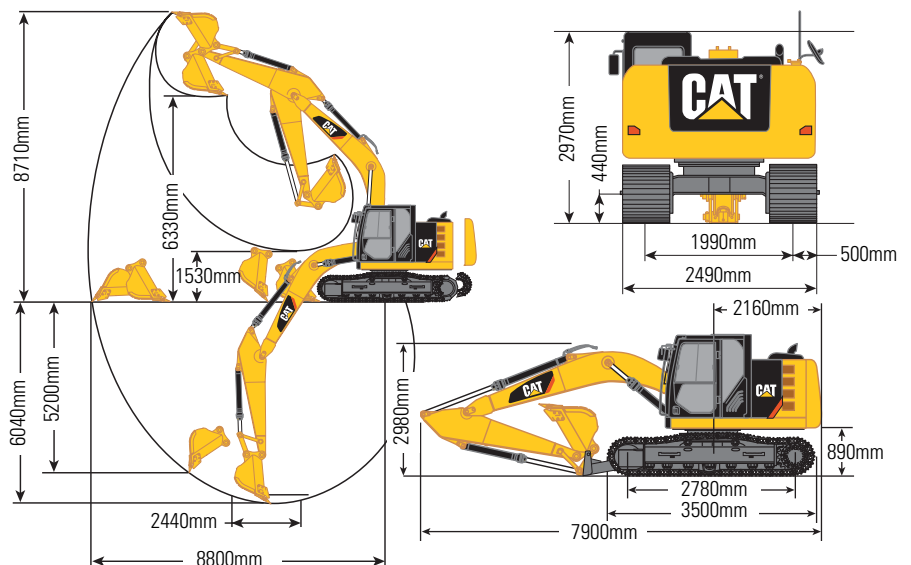
Overall Length	7900mm
Overall Width	*2490mm
Overall Height	2970mm
Operating Weight	**14200kg

### RANGE:

Dig Reach	8710mm
Dig Depth	6040mm
Digging Radius	8800mm

### KEY BENEFIT:

RAM offers the 312E with a blade and rubber or steel tracks, giving the operator plenty of options.



\*500mm wide grousers model listed. (Standard Undercarriage) \*\*Blade model is listed.